

RIKI-Lagerschächte DN 1000

NACH DIN EN 1917 UND DIN V 4034-1

+ Gerinne aus Beton

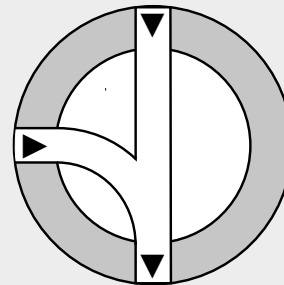
+ Typ 1 – 10

+ Sofort verfügbar

Technische Änderungen und Irrtümer vorbehalten.

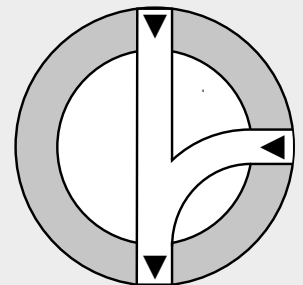
Typ 1

0/100/200 gon KG 150



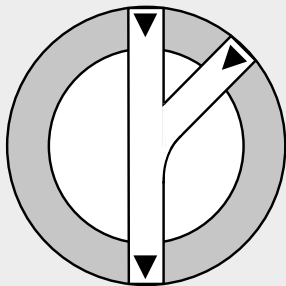
Typ 2

0/200/300 gon KG 150



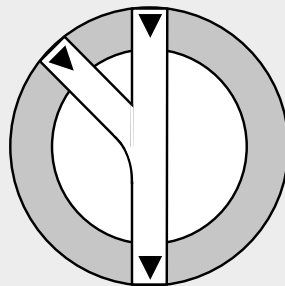
Typ 3

0/200/250 gon KG 150



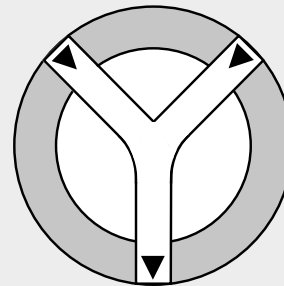
Typ 4

0/150/200 gon KG 150



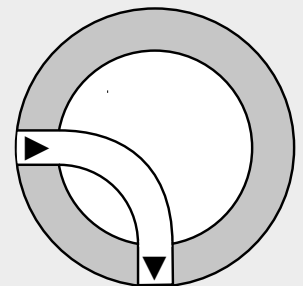
Typ 5

0/150/250 gon KG 150



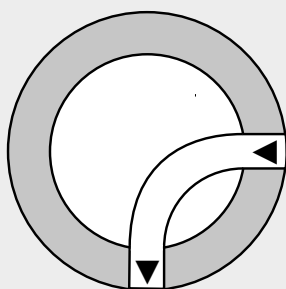
Typ 6

0/100 gon KG 150



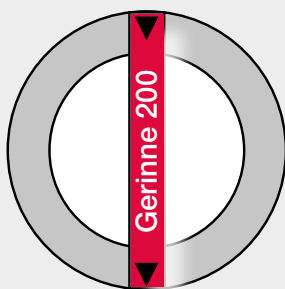
Typ 7

0/300 gon KG 150



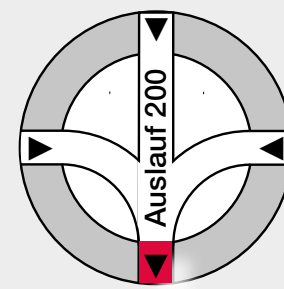
Typ 8

KG **DN 200**



Typ 9

100/200/300 gon KG 150
0 gon KG **DN 200**



Typ 10

150/200/250 gon KG 150
0 gon KG 150

